



# HISEC SECURITY MANAGEMENT SOFTWARE

The ThorGuard Management Software is a unique and flexible management platform encompassing Alarm Monitoring, Access Control & Intrusion Management and an advanced configuration platform. This sophisticated system offers the ultimate in flexibility and system design, providing a seamless security management package designed to meet the demands of today's security professionals.

## FUNCTIONALITY

ThorGuard Management Software offers the flexibility to meet all site requirements, managing a virtually unlimited number of installed HISEC Intrusion and Access Control Systems via serial, modem or TCP/IP connections. The platform design is similar to Windows Explorer providing a familiar, easy to navigate layout.

## OPERATORS

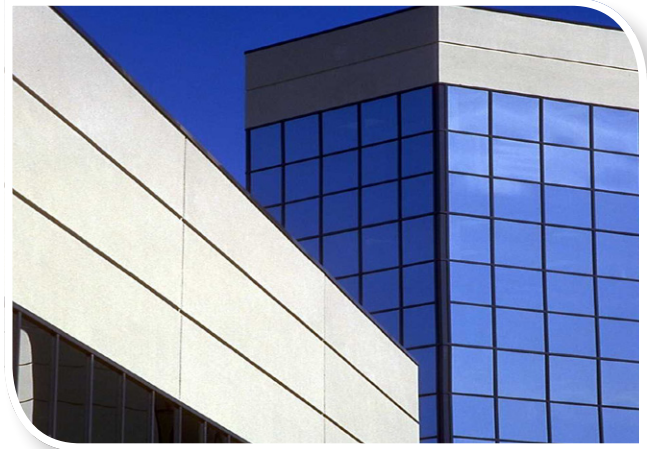
Each operator is granted access to the system according to their unique operator profile, which determines their log-in rules, language selection, access rights and access level. The system administrator is able to grant access at a high level allowing users limited access rights where required. A full audit trail is continually maintained for all operator transactions.

## VIDEO INTEGRATION

ThorGuard Management Software is fully compatible with the market leading Symmetry™ Video Management Software for remote video verification of alarms and events. The Symmetry Video Management software communicates with TGMS with all alarms and events visible through the Symmetry interface. Alarms can also be viewed, silenced and reset using either Symmetry or the TGMS.

## KEY FEATURES

- Fully scaled Management, Alarm Monitoring and configuration package
- Advanced Graphical Interface with built-in editor for full control of Intrusion and Access
- Unlimited cardholder database
- Cardholder database editor for customising dialogues and database fields
- PIN-code generator for enhanced security
- Unique access group editor
- Complete door control management, including lift management
- Advanced alarm list with alarm procedures and instructions
- Flexible report generator with detailed search criteria and multiple export options
- Simultaneous configuration, maintenance and user management
- Multi tasked operations
- Multi company features
- Optional image badging module with card encoder
- Compatible with Windows™ XP Professional, Windows Server 2003, Windows 7 and Windows Server 2008
- Supplied with MSDE, compatible with SQL2000 and SQL2008



## SPECIFICATIONS

### ThorGuard Security Management Platform:

- Microsoft SQL MSDE Database up to 2 GB and 10 client connections (both expandable with Microsoft SQL software)
- ThorGuard Server
- USB dongle for protection of the ThorGuard Server
- Site code protection for installed systems
- ThorGuard Mediator for improved client performance
- Includes one ThorGuard Client license, one Intrusion license and ten Access licenses

### ThorGuard Security Management Client:

- Additional license for extra ThorGuard Management Clients

### Image Badging Module for one HISEC Client:

- Image Badging Module
- Image Badging Editor with USB dongle protection
- Card encoding

### License for Access Control Terminal:

- License for additional Access Control Terminals

### License for Intrusion Central Unit:

- License for additional Intrusion Central Units



sales@amag.com  
www.amag.com